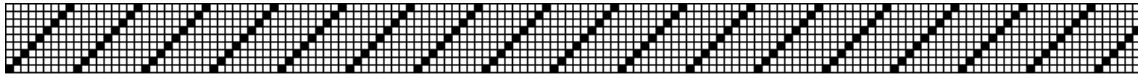
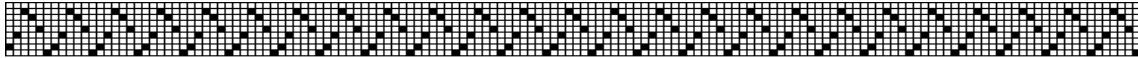


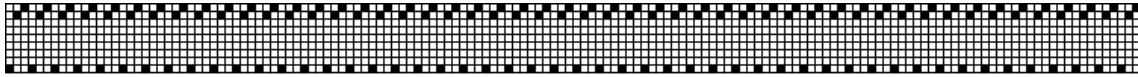
Sigma Quest



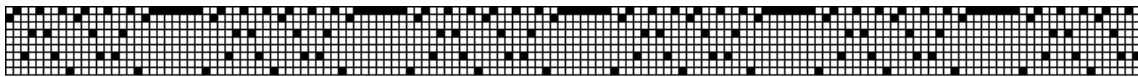
`sigma(seq())`



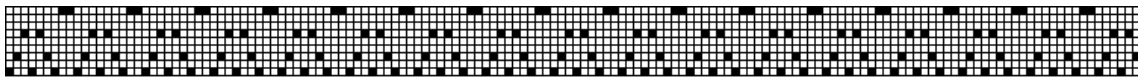
`sigma(2 ^ seq())`



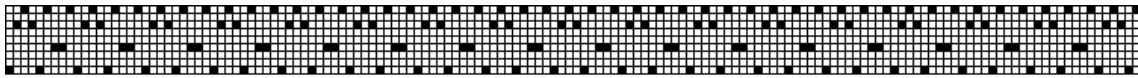
`sigma(seq() ^ 3)`



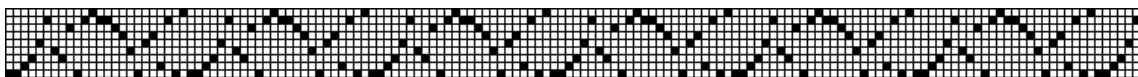
`sigma(figureseq(7))`



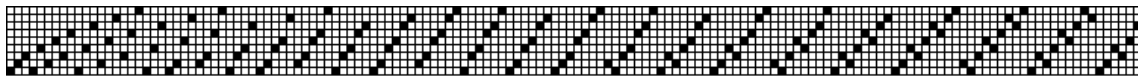
`sigma(ngonalseq(3))`



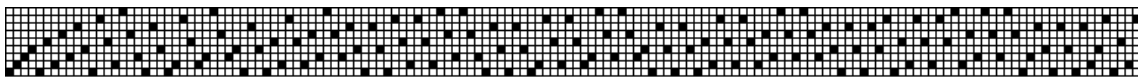
`sigma(ngonalseq(7))`



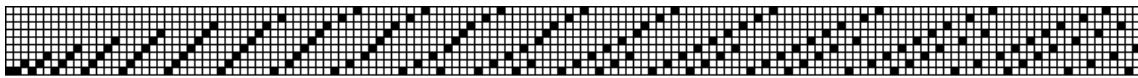
`sigma(fibseq())`



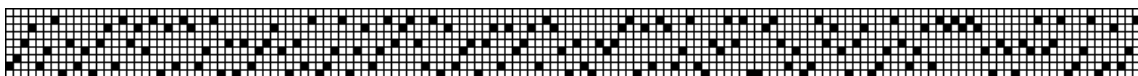
`sigma(signaseq(&e))`



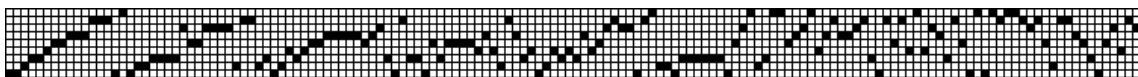
`sigma(signaseq(&pi))`



`sigma(signaseq(sqrt(3) / 2))`



`sigma(primeseq())`



`sigma(chaosseq())`

Figure 1. Sigma Sequences