

# PRACTICAL WEAVING SUGGESTIONS

VOL. 3-61





# Summer Cottons

GERALDINE WOODS

So often I have heard weavers say “I would love to wear hand woven clothes, but am scared to death to cut into them.” For that reason I have planned this project specifically for the Timid Weaver. I have purposely kept drafts and treadlings simple—depending principally on color for interest. With the wealth of fabulous colors to be found in Lily’s cottons this is easily accomplished.

Let’s start with something easy, which requires little or no cutting, to sort of bolster your confidence. The perennially popular “peasant-type” skirt—gathered or pleated to a band. If you do not have the figure for one of these skirts, how about making one for a daughter, granddaughter, sister, or that favorite niece—or a daughter-in-law. In my opinion, Lily Art. 114 Pearl Cotton, size 20/2 is a perfect weight for these skirts.

For the first one I chose yellow and decided on a very simple “round and round” border. On a 40” loom I made two skirt lengths plus enough for a waist band and a separate belt. When the weaving is completed all you need to do is to sew the two widths together and put in the hem. Then adjust the length at the top—sew in a zipper and attach a waistband of the required size.

Project number two is a skirt with a weft stripe and it was made up crosswise of the finished fabric—pleated all around. For pleated skirts I allow two and one-half yards of material plus a piece for waistband and belt.

With two skirts made you should be brave enough to tackle a dress. The material I have planned is a small check—small enough for the “ample” figure, if that’s what you have. It requires a minimum of matching, and I had a shirtwaister in mind, but it would also make a good sheath-type

dress. The skirt can be gathered or pleated. The bodice should be cut and constructed the same as a commercial fabric. All seams should be overcast or zigzagged. I used Lily’s Super-Sheen for both warp and weft. And what I mean—it is really super in every respect. Handweavers everywhere, who are interested in weaving Summer Cottons should rise up and give thanks to Lily Mills for developing Super-Sheen for us.

Project number four again using Super-Sheen—is a large block plaid—for those who are fortunate “figure—actively” to be able to wear a plaid of this size. I would like to warn you to put on an extra yard of warp (at least) because it will take more for matching.

For the in-between person we offer a small plaid—very conservative except for color. It is a regular plaid—no “up” or “down” so matching will be quite easy. Maybe I’m in a rut—but I used Super-Sheen again. After all, I’ve waited a long time for a thread like this for weaving summer dresses. And now that we have it I aim to use it.

When I started this I thought I would plan just five projects; however, a friend wanted a 10-harness fabric with a small “all-over” figure. I took the draft for project number five and moved every other *spot* from harnesses 3-4-5 and 6 up to harnesses 7-8-9 and 10. Then tied on a warp of one color. Super-Sheen again! After adjusting the tie-up for the 10-harness draft I wove the material with a lighter shade. Just one shuttle, and with no change of color it went fast.

In each of the four lengths I wove I found that there was more “take-up” on the loom than I would expect with a 20/2 warp; however, when the material was laundered there was practically no further shrinkage—about 1 to 2 inches in 6 yards.

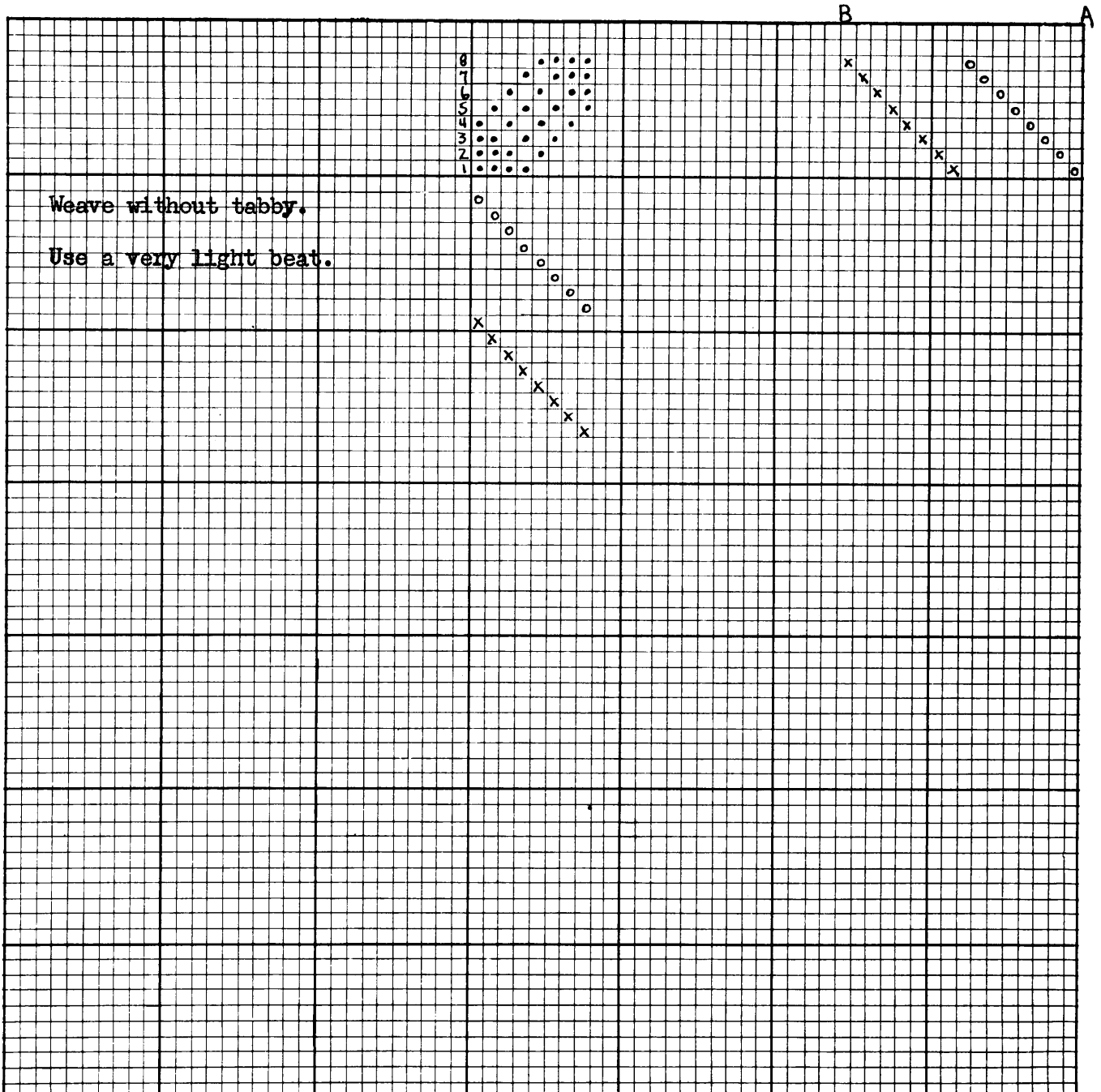




Project Dress Yardage By Geraldine Wood Hand Weaver  
 Source \_\_\_\_\_ Weave 8 harness Twill Pattern Hound's Tooth  
 Warp Lily Art. 215 Super- Dents in Reed 15 Thread from A to B X 100  
Sheen 50/3 Colors #54(o) Ends per Dent 3 - 3 - 2 Thread from \_\_\_\_\_ to \_\_\_\_\_ X \_\_\_\_\_  
181(x)  
 Pattern Weft Same Total Warp Ends 1600 Thread from \_\_\_\_\_ to \_\_\_\_\_ X \_\_\_\_\_  
as warp Width in Reed 40" Thread from \_\_\_\_\_ to \_\_\_\_\_ X \_\_\_\_\_  
 Tabby No tabby Width Finished 38" Thread from \_\_\_\_\_ to \_\_\_\_\_ X \_\_\_\_\_

NOTES: You will get better edges if the colors are entered  
from opposite selvages.

Write draft and draw-down below - Staple sample on the back



Project Yardage for dress By Geraldine Wood Hand Weaver

Source \_\_\_\_\_ Weave Tabby and Twill Pattern \_\_\_\_\_

Warp Lily Art. 215 Super- Dents in Reed 12 Thread from A to C X 6x

Sheen 50/3 Colors: 170(o) Ends per Dent 4-3-4-3 etc. Thread from A to B X 1x  
115(x)

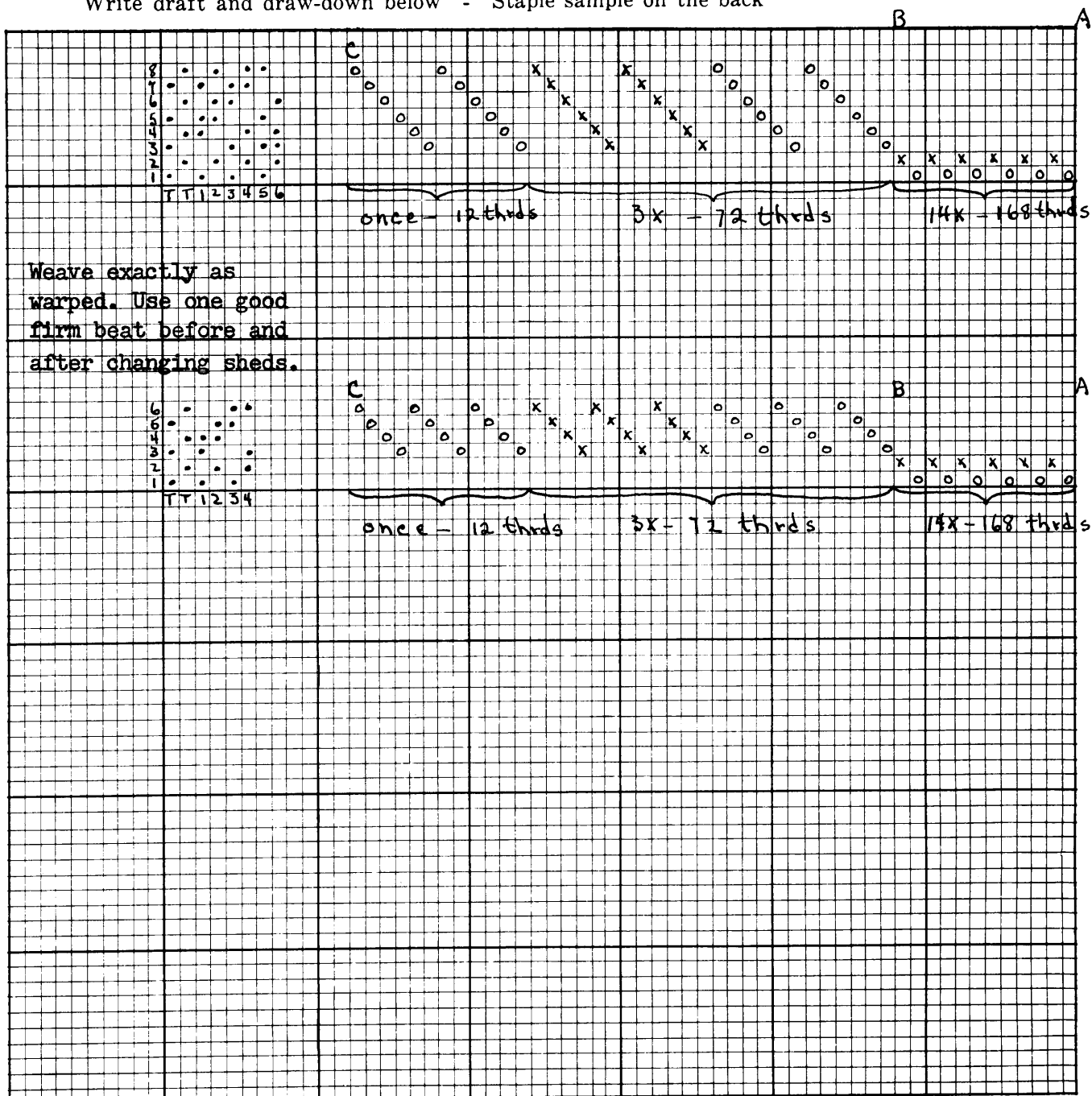
Pattern Weft Same Total Warp Ends 1680 Thread from \_\_\_\_\_ to \_\_\_\_\_ X \_\_\_\_\_

\_\_\_\_\_ Width in Reed 40" Thread from \_\_\_\_\_ to \_\_\_\_\_ X \_\_\_\_\_

Tabby Same Width Finished 38" Thread from \_\_\_\_\_ to \_\_\_\_\_ X \_\_\_\_\_

NOTES: Although I put this on 8 harnesses because I had them available,  
it could be done on 6 - or could be quite effective entirely in  
tabby on 2 or 4 harnesses.

Write draft and draw-down below - Staple sample on the back



Weave exactly as warped. Use one good firm beat before and after changing sheds.



Project Yardage for dress By Geraldine Wood Hand Weaver

Source ..... Weave Tabby-Twill Pattern .....

Warp Lily Art. 215 Super- Dents in Reed 12 Thread from A to B X

Sheen 50/3 Hunter Grn 95 Ends per Dent 4-3-4-3-etc Thread from ..... to ..... X

Pattern Weft Lily Art. 215 Total Warp Ends 1680 Thread from ..... to ..... X

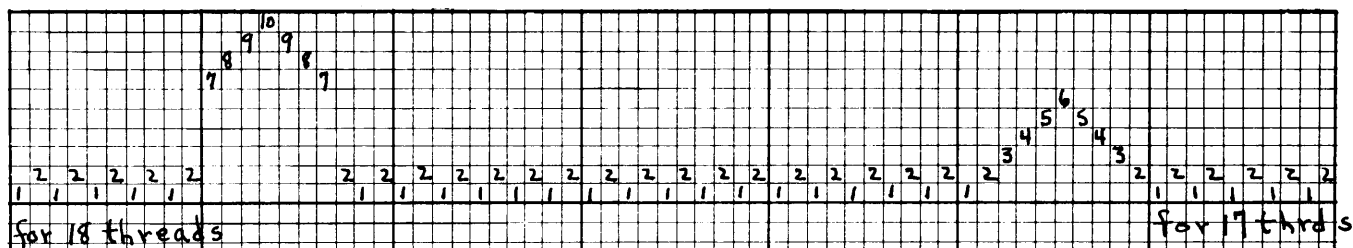
Super-Sheen 50/3 Width in Reed 40" Thread from ..... to ..... X

Nile Grn 184 Width Finished 38" Thread from ..... to ..... X

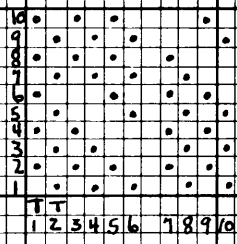
Tabby Same Width Finished 38" Thread from ..... to ..... X

NOTES: If 10 harnesses are not available this could be threaded on  
6 harnesses but the small spot would not be staggered. In  
the right colors it is a good men's shirting.

Write draft and draw-down below - Staple sample on the back



Weave exactly  
as warped.



order your  
hand weaving supplies  
from the  
**HAND WEAVERS HEADQUARTERS**  
**LILY MILLS COMPANY • Shelby, N. C.**