

WARP & WEFT

VOLUME VI

NUMBER 2

FEBRUARY, 1953

THE WEAVING BOND TRANSCENDS DISTANCE BETWEEN NEW NAMES & FAR PLACES

MRS. G. FINCK, WHO IS TREASURER OF THE CAPE GUILD OF WEAVERS OF CAPE PROVINCE, SOUTH AFRICA, REPORTS OF THAT GROUP:

THE GUILD WAS STARTED IN MAY OF 1950 BY MRS. PAUL SAUER, WIFE OF OUR MINISTER OF TRANSPORT, WHO IS AN EXPERT WEAVER, AND MISS GERMAINE BOUILLARD, AN INSTRUCTRESS OF WEAVING UNDER THE CAPE PROVINCE EDUCATION DEPARTMENT. BY MAY, 1952, WE HAD A MEMBERSHIP OF 85. ABOUT 60 OF THESE LIVE WITHIN A RADIUS OF 100 MILES, WHILST THE BALANCE IS APREAD OVER THE REST OF THE UNION. THERE IS A SISTER GUILD IN OUR ADMINISTRATIVE CAPITOL OF PRETORIA UNDER THE PRESIDENCY OF MRS. SAUER.

YOU MUST REALIZE THAT OUR WHITE POPULATION TOTALS UNDER THREE MILLION, AND OUR INDUSTRIALIZATION IS OF VERY RECENT GROWTH. CONSEQUENTLY THERE ARE NO LOOMS BEING BUILT COMMERCIALY.

THROUGH A LOAN MADE BY THE WOOL BOARD, WE AS A GUILD HAVE BEEN ABLE TO PROMOTE THE MANUFACTURE OF A 6 PEDAL, 4 HARNESS LOOM WHICH (CONTINUED PAGE 5)

WEAVERS WHO EXPECT TO BE IN THE EAST LATE IN APRIL ARE INVITED TO ATTEND THE ANNUAL EXHIBIT OF THE WORK OF MEMBERS OF THE WEAVERS GUILD OF RHODE ISLAND ON APRIL 24 AT THE HANDCRAFT CLUB, PROVIDENCE, RHODE ISLAND.

THE SAME GROUP ANNOUNCES THAT MR. S.A.ZIELINSKI OF Z HANDCRAFTS, FULFORD, QUEBEC, CANADA WILL CONDUCT A 2 DAY WORKSHOP ON MARCH 23 AND 24. HIS SUBJECTS WILL BE "UNUSUAL WEAVES FOR A FOUR HARNESS LOOM," AND "EFFICIENCY IN WEAVING."

* * * * *

THE WEAVERS GUILD OF FT. WAYNE (IND.) ANNOUNCES AN EVENING LECTURE AND AN ALL DAY WORKSHOP BY GLADYS ROGERS BROPHIL. THE LECTURE, FRIDAY EVENING, APRIL 17, IS TITLED "PLANNING OF TEXTURED FABRICS." THE WORKSHOP THE FOLLOWING DAY WILL BE DEVOTED TO SPECIAL LOOM TECHNIQUES AND IDENTIFICATION AND HANDLING OF VARIOUS MATERIALS.

* * * * *

GOODWEAVINGGOODWEAVINGGOODWEAVING

WARP & WEFT IS PUBLISHED 10 ISSUES PER YEAR-ADDRESS BOX 34, BALDWIN, MICH
SINGLE COPIES AND BACK ISSUES, 20¢ EACH PLUS POSTAGE
YEARLY SUBSCRIPTIONS, \$2.

MORE ABOUT OUR SAMPLE:

AS USUAL, WE WISH WHOLEHEARTEDLY THAT YOU COULD SEE THIS SAMPLE IN THE LARGE PIECE. THE WHOLE IS SO MUCH MORE BEAUTIFUL THAN THE MANY PARTS!

IF YOU WILL LOOK AGAIN AT THE THREADING DRAFT, YOU WILL NOTICE THAT BLOCK 1 IS USED FOR 4". THAT PUTS ALL THE RAY/COTTON RATINE ON HARNESSSES 1 AND 3. THERE IS NO CHANGE IN THE ROTATION OF THE COLORS USED IN THE WARP WHERE BLOCK 2 IS THREADED; THE ONLY CHANGE IS IN THE PLACEMENT OF THE RATINE WHICH GOES ON HARNESSSES 2 AND 4.

EXAMINATION OF THE TREADLING SHOWS THAT FOR A CERTAIN SECTION TREADLE A IS USED, WHICH BRINGS TO THE SURFACE ALL THE COLORED THREADS IN THE 4" BLOCK AND ALL THE RATINE THREADS IN THE 2" ONE, GIVING SECTIONS OF NATURAL AND COLOR ON THE SURFACE OF THE WEB. ACTUALLY THIS IS A VERSION OF THE LOG CABIN TECHNIQUE, AND BY INCREASING THE SIZE OF THE BLOCKS IN THE WEFT, A SUMMER AND WINTER EFFECT RESULTS. IT IS A DESIGN MORE INTERESTING IN A LARGE SIZE THAN CAN BE SHOWN IN 2" SQUARES, SO WE HOPE YOU WILL THREAD UP A SAMPLE AND EXPERIMENT WITH IT. YOU WILL BE PLEASED AND SURPRISED WITH THE RESULTS.

WE PLANNED THIS FABRIC FOR USE AS SUMMER SLIP COVERS, AS THE COLORS ARE WASHABLE AND THE MATERIAL COULD BE REPLACED ON THE FURNITURE WITHOUT IRONING--A GOOD FEATURE FOR HOT SUMMER DAYS. HOWEVER, OUR STUDIO GUESTS WERE MUCH TAKEN WITH THE IDEA OF USING THIS FOR DRAPERIES, UNLINED, WITH THE BLOCKS MADE QUITE LARGE. WE LIKED THAT IDEA, TOO. ESPECIALLY IF THE COLORED WEFT THREADS ARE OMITTED SO THAT THE BLOCKS BECOME SHADY AND INDISTINCT. IT WOULD NOT LOOK

TOO MODERN FOR THE TRADITIONAL LIVING ROOM, NOT TOO PERIOD FOR THE SIMPLICITY OF MODERN DECOR.

IF THIS WARP WERE THREADED IN ALL NATURAL, OR GREY, BEIGE, NATURAL, AND WHITE, A VERY NICE SOFT TEXTURED EFFECT COULD BE GAINED WITH THE CONTRAST EMPHASIS ON THE DIFFERENCES BETWEEN THE ROUGHNESS OF THE RAY/COTTON RATINE AND THE SMOOTHNESS OF THE COTTON. THERE WOULD ALSO BE THE CONTRAST BETWEEN THE DULLNESS OF THE UNMERCERIZED COTTON AND THE GLOSS OF THE RATINE. THE NEUTRAL PALE COLORS WOULD GIVE A MORE MODERN EFFECT THAN THE RATHER TRADITIONAL COLORS OF OUR SAMPLE. DONE IN BLACK AND WHITE THE RESULT WOULD BE A VERY MODERN STRIKING FABRIC WITH A DEFINITE SUMMER/WINTER LOOK.

SOME OF YOU MAY WISH TO DO A HEAVIER VERSION OF THIS, WITH THE CROCHET COTTON REPLACED BY CARPET WARP. IF YOU WANT TO DO THIS, WE SUGGEST THAT THE RATINE BE USED DOUBLE, SO THE EFFECT WILL NOT BE LOST. ONE OF THE MOST ATTRACTIVE SAMPLES WE'VE SEEN WAS AN UPHOLSTERY DONE WITH CARPET WARP AND RATINE, DYED MATCHING COLORS, AND MADE INTO A PLAID. THE SAMPLE TO WHICH WE REFER WAS BEIGE, TURQUOISE CORAL AND PLUM, AND THE DYEING WOULD BE SIMPLIFIED BY THE SPECIAL PERFORATED TUBE PUT UP OF THIS RATINE. CARPET WARP TOO CAN BE PURCHASED IN SKEINS TO SIMPLIFY DYEING.

* * * * *

SISTER GOODWEAVER SAYS:

THE WAY TO BE SURE
THERE IS NOTHING WRONG

IS TO CHECK EACH STEP
AS YOU GO ALONG.

RIBBON CANDY

OUR SAMPLE THIS MONTH, IN A LARGE PIECE, LOOKS FOR ALL THE WORLD LIKE A BIG BOX OF THAT DELICIOUS RIBBON SUGAR CANDY WHICH IS A BIT RARE THESE DAYS. IT IS AN INTERESTING YET VERY EASY FABRIC TO MAKE AND ONE WHICH WE THINK YOU WILL PARTICULARLY ENJOY.

THREADING DRAFT:

0	X	X- COLORED THREADS
X	0	
0	X	0-NATURAL THREADS
X	0	

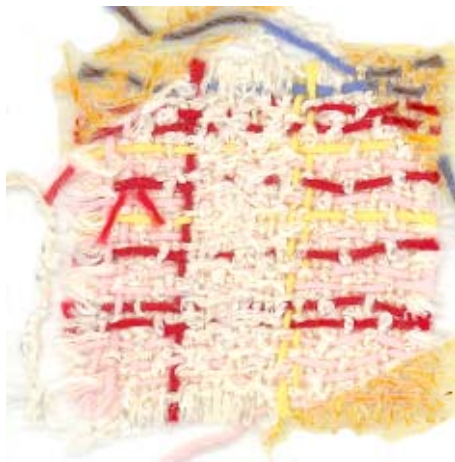
BLOCK 2 BLOCK 1
REPEAT BLOCK 1 FOR 4"
REPEAT BLOCK 2 FOR 2"

TIE-UP:

0	0	X	X	X	0	X-COUNTER BALANCED 0-RISING SHED
0	X	X	0	0	X	
X	X	0	0	X	0	
X	0	0	X	0	X	
1	2	3	4	A	B	

TREADLING:

A, 1, A RAY/COTTON RATINE
3, 1 PINK CROCHET COTTON
B, 2, B, 4, B RAY/COTTON RATINE
1 RED CROCHET COTTON
A, 3, A, 2, A, 4, A, 1, A-RAY/COTT. RATINE
3, 1, YELLOW CROCHET COTTON
B, 2, B, 4, B, 1, B, 3, B, 2, B RAY/COTTON RATINE
4 BLUE CROCHET COTTON



COLOR ROTATION FOR 2" SECTION OR FOR 2" OF WARP ON PLAIN BEAM:

ALL COLORS ARE CROCHET THREAD:

4 PINK	1 PINK
2 RED	1 RED
2 PINK	1 PINK
1 RED	1 YELLOW
1 PINK	2 RED
1 YELLOW	2 BLUE
	1 RED

THESE COLORS ARE USED ALTERNATE-WITH THE RAY/COTTON RATINE, NATURAL COLOR. THERE ARE 20 COTTON AND 20 RATINE PER SECTION.

WARP USED:

HALF THE THREADS OF THE WARP ARE THE RAY/COTTON RATINE, SLIGHTLY LOOPY, SLIGHTLY NUBBY, JUST ROUGH ENOUGH TO BE INTERESTING. IT IS ON SPECIAL SALE AT THE YARN & SHUTTLE DEPOT, 21345 WOODWARD AVE., FERNDALE, 20, MICHIGAN. IT IS AVAILABLE ONLY IN NATURAL BUT IS PUT UP ON PERFORATED 1/8" TUBES SO THAT IF DESIRED IT CAN BE PACKAGE-DYED. IT IS 65% RAYON, 35% COTTON, 1700 YARDS PER POUND, \$1.50.

THE OTHER HALF OF THE WARP IS GOOD OLD FASHIONED, EASY-TO-BUY CROCHET COTTON, BOILPROOF IN THE USUAL COLORS.

WEFT USED:

ABOUT 90% OF THE WEFT IS THE SAME RAY/COTTON RATINE OF THE WARP; THE COLORED THREADS ARE ALSO THE SAME AS THE WARP.

SLEY:

20 THREADS PER INCH
1 COTTON, 1 RAY/COTTON RATINE
IN EACH DENT OF 10 DENT
REED.

THE CORONATION ROBES

FROM ELIZABETH SCOTT, EDITRESS OF HANDWEAVER & SPINNER OF CANTERBURY, ENGLAND, WE BRING YOU THIS ARTICLE DESCRIBING THE CORONATION ROBES FROM THE VIEWPOINT OF THE ARTIST-WEAVER:

"ON THE DAY THE QUEEN LEAVES WESTMINSTER ABBEY THE CROWNED SOVEREIGN SHE WILL BE WEARING THE PURPLE ROBES WHICH HAVE THRILLED HANDWEAVERS THROUGHOUT THE WORLD, FOR THESE PURPLE VELVET ROBES HAVE BEEN ENTIRELY HANDWOVEN. THE SILK WAS PRODUCED AT A FAMOUS SILK FARM IN KENT AND WAS WOVEN IN A WELL KNOWN ESSEX SILK FACTORY, BY HIGHLY SKILLED WOMEN WEAVERS, ONE OF WHOM WAS PRIVILEGED TO WEAVE THE CORONATION VELVET WORN BY ELIZABETH THE QUEEN MOTHER AT HER CORONATION IN 1937.

TO MANY THE CORONATION ROBES MEAN THE PURPLE ROBES THE QUEEN WILL BE WEARING WHEN SHE LEAVES WESTMINSTER ABBEY, BUT THERE IS A RELIGIOUS SIDE TO ALL THE POMP, AND DURING THE MOST SOLEMN PARTS OF THIS ANCIENT CEREMONIAL OTHER ROBES HAVING A DEEP RELIGIOUS SIGNIFICANCE WILL BE PLACED ON HER MAJESTY.

IT IS INTERESTING TO RECALL THE ROBES WORN BY QUEEN VICTORIA AT HER CORONATION. THE ROBES OR VESTMENTS AS THEY ARE CALLED ARE IN CHARGE OF AN OFFICER KNOWN AS THE "KEEPER OF THE ROBES" AT ST. JAMES PALACE, AND TO A LARGE EXTENT THEY PRESERVE THE ANCIENT FORMS AND DESIGNS OF ORNAMENTATION.

AFTER THE MOST SOLEMN ACT OF ANOINTING, WHICH IS INDEED A SACRAMENT, THE COLOBIUM SINDONIS IS FIRST PLACED ON THE QUEEN, AND THEN THE DALMATIC OR SUPERTUNICA IS PUT ON OVER IT. THE COLOBIUM

SINDONIS IS A WHITE GARMENT SIMILAR TO THE ALB OF A PRIEST. QUEEN VICTORIA'S WAS A SLEEVELESS GARMENT OF SOFT FINE LINEN, EDGED WITH LACE AT LOW NECK AND FLOUNCED HEM. A THICK GOLD CORD GIRDLE IS WORN OVER IT. THE DALMATIC IS A LONG JACKET OF CLOTH OF GOLD WITH WIDE POINTED SLEEVES AND NO FASTENINGS. THE DESIGN WOVEN INTO THE CLOTH OF GOLD IS A PATTERN OF PALM LEAVES, PINK ROSES, GREEN SHAMROCKS, AND PURPLE THISTLES, ALL IN SUCH PALE COLORS THAT WHEN THE CLOTH IS MOVED A VERY DELICATE EFFECT IS GIVEN. THE GARMENT IS LINED WITH ROSE COLORED SILK.

IN THE CORONATION CEREMONY THE STOLE FOLLOWS THE DALMATIC AS IT DID IN THE 11 AND 12 CENTURIES, AND IS WORN TODAY BY THE DEACONS OF THE GREEK ORTHODOX CHURCH. QUEEN VICTORIA'S STOLE WAS CLOTH OF GOLD THREE INCHES WIDE WITH HEAVY GOLD FRINGE AT EACH END. IT IS EMBROIDERED WITH SILVER THREAD AND A LITTLE COLOR. THE EMBLEMS ON IT ARE IMPERIAL EAGLES, SHAMROCKS, THISTLES, AND ROSES SEPARATED BY SILVER CORONETS AND AT EACH END A PANEL SHOWING THE RED CROSS OF ST. GEORGE ON A SILVER GROUND. IT TOO IS LINED WITH ROSE SILK.

THE LAST OF THE VESTMENTS PLACED UPON THE QUEEN IS THE IMPERIAL MANTLE. IN MEDIEVAL RUBRIC THIS IS DESCRIBED AS FOUR SQUARE, SUPPOSEDLY TO REPRESENT THE FOUR QUARTERS OF THE GLOBE. THE MANTLE WORN BY QUEEN VICTORIA IS AGAIN CLOTH OF GOLD AND THE DESIGN WOVEN INTO IT IS A BRANCHED PATTERN ARRANGED IN OVALS OUTLINED IN PURPLE SILK AND CAUGHT TOGETHER WITH SILVER CORONETS AND FLEUR DE LYS ALTERNATELY. RED AND WHITE TUDOR ROSES, GREEN SHAMROCKS, PURPLE AND GREEN THISTLES, AND SILVER EAGLES FILL THE SPACES. THE COLORS USED FOR THIS MANTLE ARE STRONGER THAN THOSE IN THE DALMATIC.

CORONATION ROBES (CONT.)

THE STOLE AND IMPERIAL MANTLE ARE PLACED ON THE QUEEN AFTER THE SWORD IS GIVEN AND OFFERED UPON THE ALTAR.

THE ROYAL DALMATIC, THE STOLE AND MANTLE, ARE USUALLY WOVEN AT SPITALFIELDS AND EMBROIDERED AT THE ROYAL SCHOOL OF ART NEEDLEWORK. THESE VERY WONDERFUL VESTMENTS ARE INDEED BEAUTIFUL EXAMPLES OF THE WEAVING DONE AT SPITALFIELDS BY THE DESCENDANTS OF THE FRENCH HUGUENOT REFUGEES WHO SETTLED THERE AFTER THE REVOCATION OF THE EDICT OF NANTES.

ALL THE BEST IN MATERIALS HAS GONE INTO THE MAKING OF THE QUEEN'S BEAUTIFUL ROBES, AND IT IS WELL TO REMEMBER WHEN WE ATTEMPT OUR OWN HANDWOVEN MATERIALS THAT POOR AND INFERIOR QUALITY YARNS WILL NOT PRODUCE HIGH QUALITY RESULTS, SO AS IN ALL OTHER CRAFTS, AND INDEED, IN EVERYTHING THAT WE DO, OUR MOTTO SHOULD BE "ONLY THE BEST WILL DO!"

* * * * *

ON PAGE SIX WE HAVE REVIEWED 2000 YEARS OF TEXTILES. "THIS LITTLE NOTE IS TAKEN FROM THAT BOOK:

THE VENERABLE NUN OF HROS-WITHA OF GANDERSHEIM, WHO WROTE COMEDIES ON LEGENDS OF THE SAINTS, PREFACED THEM WITH:

"IF MY WORK PLEASURES YOU, I SHALL BE GLAD; BUT IF IT PLEASURES NOBODY, I HAVE MYSELF ENJOYED WHAT I HAVE DONE."

WHAT AN EXCELLENT MOTTO, A REAL ACHIEVEMENT, IF HONESTLY ADOPTED TO BECOME A STATE OF MIND, FOR THOSE OVER-FAREFUL CREATIVE WEAVERS IN OUR RANKS!

CAPE GUILD (CONT.)

TAKES A 50" REED. A NUMBER OF THESE HAVE BEEN BOUGHT BY MEMBERS, BUT IN THESE DAYS OF SMALL APARTMENTS AND RESTRICTED LIVING SPACE, THE DEMAND SEEMS TO BE FOR A SMALLER AND MORE COMPACT LOOM. THIS WE HOPE TO HAVE IN THE NEAR FUTURE. REEDS, HEDDLES, WINDERS, ETC. HAVE ALL STILL TO BE IMPORTED.

AMONGST OUR OTHER ACTIVITIES IS THE PURCHASING OF WOOL AND COTTON IN BULK FROM THE FACTORIES, WHICH WE RE-SELL TO MEMBERS IN SMALL AMOUNTS TO MEET THEIR REQUIREMENTS. WE ISSUE A BULLETIN EVERY QUARTER IN ENGLISH AND AFRIKAANS, AND OCCASIONALLY A CIRCULAR LETTER TO COUNTRY MEMBERS.

WE HOLD AN ANNUAL EXHIBITION OVER A PERIOD OF TEN DAYS, WHERE MEMBERS FROM ALL OVER THE UNION SEND ARTICLES FOR SALE AND EXHIBIT.

WE RENT A VERY CENTRAL GUILD ROOM, WHERE THE EXECUTIVE MEETS ONE AFTERNOON A WEEK FOR THE SALE OF WOOL, COTTON, AND EQUIPMENT, AND TO GIVE ADVICE TO THOSE MEMBERS WHO REQUIRE IT. "

THANK YOU, MISS FINCK. YOURS SOUNDS LIKE AN ACTIVE AND INTERESTING GROUP OF WORKERS WHO FACE DIFFICULTIES AND FIND THE BEST POSSIBLE SOLUTION. YOU COULD PERHAPS BE A GOOD INFLUENCE ON THOSE OF OUR GROUPS HERE WHO ARE NOT ACTIVE ENOUGH TO BE OF REAL VALUE TO THE MEMBERS.

* * * * *

THE DEVELOPMENT OF THE JACQUARD LOOM CAUSED MARY WEBB TO SAY IN "PRECIOUS BANE"---"THE WHIR OF SPINNING WHEELS HAS CEASED IN OUR PARLORS, AND WE HEAR NO MORE THE TREADLES OF THE LOOM, THE SWIFT SILKEN NOISE OF THE FLUNG SHUTTLE, THE INTERMITTENT THUD OF THE BATTEN, BUT THE IMAGINATION HEARS THEM, AND THEIRS IS THE MELODY OF ROMANCE."

SILAS SAYS:

IN OLDEN TIMES WEAVERS WERE NOT ONLY ILL TREATED, BUT SCORNEED, YET THOSE WHO TRADED THE RESULTS OF THEIR LABORS WERE HIGHLY REGARDED. A CONTEMPORARY OF HAREN-EL-RASCHID, ABU-AL-ATAHYAH, SAYS WITH OBVIOUS CONDESCENSION THAT "WHEN A PIOUS MAN FEARS GOD IN THE RIGHT WAY, IT THEN DOES NOT MATTER EVEN IF HE SHOULD BE A WEAVER." EVEN CHRISTOPHER COLUMBUS WAS SOMETIMES SCORNFULLY CALLED A "LANERO" WHICH MEANS WOOL WEAVER, BECAUSE IN HIS YOUTH HE ASSISTED HIS FATHER AT THAT OCCUPATION.

* * * * *

DID YOU KNOW THAT THE TERM "WARP" COMES FROM THE OLD NORSE WORD "VARP", WHICH MEANS "TOWLINE?"

* * * * *

FOR THE FINEST BLANKETS MADE BY THE HOPI AND NAVAJO INDIANS, THE METHOD OF SMOOTHING THE YARN IS ONE WHICH HAS BEEN HANDED DOWN FOR CENTURIES. THE YARN IS DRAWN ACROSS A CORNCOB OR PIECE OF SANDSTONE TO REMOVE THE FUZZINESS AND UNEVEN LUMPS. THE RUBBING OF THE YARN ACROSS THE SANDSTONE WEARS RIDGES IN THE STONE AND PREHISTORIC RUINS YIELD PIECES OF STONE GROOVED IN THE SAME MANNER AS THOSE USED BY THE OLDER MORE CAREFUL INDIAN WORKERS OF TODAY.

* * * * *

HAVE YOU SEEN THOSE HANDSOME MEN'S WHITE WOOL SHIRTS, WITH THE DOUBLE ROWS OF 2" BORDER IN TRADITIONAL PATTERNS ACROSS THE CHEST? THEY ARE MOST ATTRACTIVE, AND ANY MAN WOULD BE PROUD TO WEAR ONE. YOU'D BETTER MAKE YOUR OWN, HOWEVER--THEY RETAIL FOR \$40.00.

BOOK REVIEW:

ONE OF THE LOVELIEST OF BOOKS ABOUT TEXTILES IS 2000 YEARS OF TEXTILES BY ADELE COULIN WEIBEL. THE BOOK WAS PUBLISHED WITH THE ASSISTANCE OF THE KRESGE FOUNDATION OF DETROIT, AND IS AVAILABLE AT THE DETROIT INSTITUTE OF ARTS, 5200 WOODWARD AVE., WHERE MISS WEIBEL WAS FOR MANY YEARS EMPLOYED IN THE TEXTILE DEPARTMENT.

THIS BOOK IS LARGE-10" X 14", OF GOOD PAPER AND BEAUTIFULLY ILLUSTRATED. IT THOROUGHLY COVERS MANY PHASES OF TEXTILES--MATERIALS, BOTH FIBERS AND DYES; TECHNIQUES, SPINNING, WEAVING, WEAVES, AND WEAVERS; HISTORY, PRECURSORS OF WOVEN FABRICS, THE EARLIEST TEXTILES, EGYPTIAN AND SYRIAN TEXTILES EARLY SILK TRADE, EARLY WESTERN SILK FABRICS, THE SASSANIAN EMPIRE, BYZANTINE SILKS, ISLAMIC TEXTILES, AND EUROPEAN TEXTILES.

THE BOOK CONTAINS 248 COLLOTYPE PLATE ILLUSTRATIONS, AND 8 PHOTOGELATINES IN COLOR. THE ILLUSTRATIONS OF THE FABRICS ARE ARRANGED CHRONOLOGICALLY, WHICH MAKES A PLEASANT GAME OF TRACING FEATURES OR TECHNIQUES FROM INCEPTION TO DISUSE. THE HISTORY SECTION OF THE BOOK STARTS WITH THE FRAGMENTS OF TEXTILES PRESENT IN THE NEOLITHIC LAKE DWELLINGS AND BOG BURIALS, THROUGH THE EARLIEST OF THE PATTERN WOVEN TEXTILES, SILKS, BROCADES FROM BHAGDAD TO SPAIN, THE CONTRIBUTIONS OF THE SILK WEAVERS OF LYONS, AND WARP PAINTED VELVETS. AS THE WORK OF EACH PERIOD IS DESCRIBED IT IS RELATED TO THE SOCIOLOGICAL HISTORY OF TIME AND PLACE. A TRULY LOVELY BOOK.

TITLE: 2000 YEARS OF TEXTILES
AUTHOR: ADELE COULIN WEIBEL
PUBLISHER: PANTHEON BOOKS
PRICE: \$20.

QUESTIONS & ANSWERS:

ONE OF THE MOST FREQUENT QUESTIONS PRESENTED US IS "HOW CAN I USE MY WEAVING TO BRING IN EXTRA INCOME?"

THIS IS NOT A QUESTION ONLY FOR AN INDIVIDUAL, BUT WAS PRESENTED TO YOUR EDITOR RECENTLY BY A PROFESSIONAL SOCIAL WORKER IN BEHALF OF SOME OF HIS CLIENTS--SO IT IS A PROBLEM OF REALLY WIDESPREAD INTEREST.

HERE ARE SOME SUGGESTIONS WHICH MAY PROVE HELPFUL:

1- INTEREST YOUR FRIENDS AND NEIGHBORS. DON'T BE AFRAID TO TALK OF YOUR WEAVING AND SHOW IT OFF PROUDLY. USE YOUR LINENS WHEN YOU HAVE GUESTS; WEAR CLOTHES YOU HAVE WOVEN. YOU MIGHT EVEN MAKE A HOUSE-TO-HOUSE CANVAS IN YOUR LOCALITY--MANY MONEY-MAKERS STARTED ON THE DOORSTEP LEVEL.

2-ONE SALESMAN-YOU-CAN SELL A CERTAIN AMOUNT; SEVERAL CAN SELL MUCH MORE. ENLIST FRIENDS AS AGENTS TO MARKET YOUR PRODUCT AMONG ACQUAINTANCES ON A PERCENTAGE BASIS, AS THE GREETING CARD INDUSTRY HAS FOUND SO SUCCESSFUL.

3- IF YOU LIVE IN A PRIVATE HOUSE OR A GROUND FLOOR APARTMENT IT IS POSSIBLE TO SET UP A TINY SHOP WITH YOUR WEAVING ATTRACTIVELY DISPLAYED IN THE FRONT WINDOW. YOU'LL BE SURPRISED AT THE NUMBER OF PASSERS-BY WHO WILL DROP IN, BUT BE SURE FIRST TO CHECK WITH YOUR LANDLORD OR ZONING AUTHORITIES, IF ANY.

4- IF YOU HAVE A CUSHION OF CAPITAL, AN ADVERTISEMENT IN A NEWSPAPER OR MAGAZINE CAN BRING

GOOD RESULTS, AND SO CAN POSTERS.

5- GET YOUR WEAVING INTO THE SHOPS. LIST ALL THE GIFT STORES DEPARTMENT STORES, AND SPECIALTY SHOPS IN YOUR TOWN AND VISIT EACH. IF THERE IS A WOMAN'S EXCHANGE, PUT IT HIGH ON YOUR LIST. BRING SAMPLES TO SHOW THE BUYERS AND DO NOT BE AFRAID TO LEAVE YOUR CREATIONS ON CONSIGNMENT. THIS MEANS THAT THE STORE PAYS FOR WHAT IS SOLD AND YOU TAKE BACK THE REST. YOU TAKE A SMALL CHANCE ON STORE SOILED ARTICLES, BUT ELIMINATE DANGER OF YOUR HAND WORK GOING TOO CHEAPLY ON SALE, AND YOU HAVE AN OPPORTUNITY TO LEARN WHAT WILL SELL, BOTH THROUGH ACTUAL SALES MADE AND SUGGESTIONS FROM OWNER.

6- IF YOU CAN TURN OUT REALLY UNUSUAL AND LOVELY TABLE LINENS, PERHAPS TO MATCH SPECIAL CHINA PATTERNS, YOU MIGHT TRY TO MAKE AN ARRANGEMENT WITH A CLASS A INN OR TEA ROOM TO TAKE SOME OF THEM ON CONSIGNMENT. ONE OF OUR MORE SUCCESSFUL WEAVERS COMBINES A LOVELY SWEDISH TEA ROOM WITH HER LOOM AND GIFT SHOP, AND IT IS A FINE, SUCCESSFUL ARRANGEMENT.

* * * * *

DAILY WEAVING

LIFE'S PATTERN BRINGS ITS JOY
AND TEARS,
HOW INTRICATE THE WEAVING!
TO FIT EACH TASK INTO THE LOOM,
TO BLEND THE LAUGHTER WITH THE
GLOOM,
AND HOPEFULNESS WITH GRIEVING.
THEN LOOKING BACK ACROSS THE
YEARS
OUR OWN LIFE'S TAPESTRY APPEARS.

DOROTHY B. WARNE

The Weaver's Marketplace

REDUCTION IN PRICE OF
THIRSTY LINEN

SPECIALLY ABSORBENT TOWEL LINEN
10/2, 1500 YDS. PER LB.

WAS \$3.75, NOW ONLY \$3.25

7/2, 1050 YDS. PER LB.

WAS \$3.50, NOW ONLY \$3.00

COMBINE 10/2 WARP WITH 7/2 WEFT

ROBIN & RUSS HANDWEAVERS
10 W. ANAPAMU ST.
SANTA BARBARA, CALIFORNIA

LOOMLORE
SAYLINMILL
THIRSTY TOWEL LINENS
SAMPLE CARDS \$.25

WE-GO WINDERS \$27.50
WE-GO YARDAGE COUNTERS \$12.50
NORWOOD LOOM AGENCY

THE WORKBASKET
BOX 691 RR-1
WEST CHICAGO
ILLINOIS
PHONE-W. CHI. 485W

SECOND ANNUAL TOWN & WOODS WORKSHOP

THOSE WHO ATTENDED LAST YEARS' TOWN & WOODS WORKSHOP WERE SO ENTHUSIASTIC THAT WE FEEL IMPELLED TO OFFER IT AGAIN. HERE ARE THE PROPOSED DATES, BUT THESE ARE NOT FINAL. IF YOU WANT TO COME SOME OTHER TIME, OR WANT SOME SPECIAL HELP, LET US KNOW YOUR NEEDS AND WE WILL TRY TO WORK OUT SOMETHING FOR YOU.

JULY 13-17, INCLUSIVE, 5 DAYS
13-24, INC., 10 WORKING
DAYS PLUS 2 DAY
WEEKEND

20-24, INCLUSIVE, 5 DAYS

CLASS OR INDIVIDUAL WORK

AUGUST 10-14, INCLUSIVE, 5 DAYS
10-21, INC., 10 WORKING
DAYS PLUS 2 DAY
WEEKEND

17-21, INCLUSIVE, 5 DAYS

BEGINNERS OR ADVANCED STUDENTS

WARP & WEFT

BOX 34

BALDWIN, MICH.

IT IS WITH GREAT PLEASURE
THAT THE NORWOOD LOOM COMPANY AN-
NOUNCES THE APPOINTMENT OF STILL
ANOTHER NEW DISTRIBUTOR:

MRS. BETTYE LEFTWICH
BETTYE LEE WEAVING STUDIO
2023 HARBERT AVE.
MEMPHIS, TENNESSEE

WARP & WEFT SHOP OF BALDWIN,
MICHIGAN, INVITES READERS OF
WARP & WEFT MAGAZINE TO SUBMIT
HANDWOVEN ARTICLES FOR PROPOSED
CONSIGNMENT. SEND SAMPLE OF
ARTICLES, MARKED WITH YOUR
PRICE, AS SOON AS POSSIBLE TO
WARP & WEFT SHOP
BALDWIN, MICHIGAN